



Datasheet

Video Smoke Detection Video Fire Detection



Version 3.78

This Specification Sheet gives the details of system requirements, feature details and other salient points of AllGoVision's Video Smoke Detection (VSD) & Video Fire & Detection (VFD) Features.

Revision Date: January, 2017

AllGoVision Technologies Pvt Ltd

Email: contact@allgovision.com
Website: www.allgovision.com

Contents

COPYRIGHT INFORMATION	2
INTRODUCTION	3
SYSTEM REQUIREMENT	3
FEATURE DESCRIPTION	4
Technical Specification	4
Camera Installation Scenario.....	5
INTEGRATION.....	6
Federated Architecture	6
ALLGOVISION GUI.....	8

COPYRIGHT INFORMATION

© 2017 AllGoVision Technologies Private Limited, Bangalore, India. All Rights Reserved.

All information contained in this document is the property of AllGoVision Technologies Private Limited., It is not to be disclosed by the recipients to third parties, neither allowed to be reproduced by or for third parties in any form or by any means, electronic nor mechanical, including photocopying, without prior written permission from AllGoVision Technologies Private Limited.

INTRODUCTION

This Data sheet gives the details of system requirements, feature details of AllGoVision's Video Smoke Detection (VSD) and Video Fire Detection (VFD) features.

The Video Analytics product can provide rapid detection of smoke and fire appearing in the view and can send alarms as an early warning system.

SYSTEM REQUIREMENT

AllGoVision analytics has the following system hardware and software requirements.

CATEGORY	REQUIREMENT
Operating System	Windows 7, 8, 10
CPU	Intel i7, RAM 16 GB for 12 channels Intel 12 Core Xeon, RAM 32 GB for 24 channels
Network	Ethernet, 100 Mbit or higher recommended
Hard Disk Space	50 GB for 1 week storage of alarm files (images & videos)
Database	MySQL 5.5.2
Resolution and Frame Rate	640x480 and above up to 1080p Frame rate: 10 fps and above
Stand Alone version camera support	Models from Axis, Pelco, Bosch, Sony, Honeywell, IQinvision, Hikvision, Dahua, ISD, Panasonic, Brickcom, ArecontVision, IndigoVision, Cisco, Samsung, Acti, Vision, Digital Watchdog, and others (ONVIF Cameras).
VMS Support	Milestone, Genetec, IndigoVision, exacqVision, Cisco, Honeywell Note: With any other VMS supported through Alarm Center

FEATURE DESCRIPTION

- AllGoVision provides Video Smoke Detection (VSD) & Video Fire Detection (VFD).
- VFD/VSD will provide Fire and smoke detection for both indoor and outdoor environments.
- VFD/VSD can provide rapid detection of Fire & Smoke even when Fire & Smoke is formed in 10-15% of the view.
- The smoke can be with or without fire.

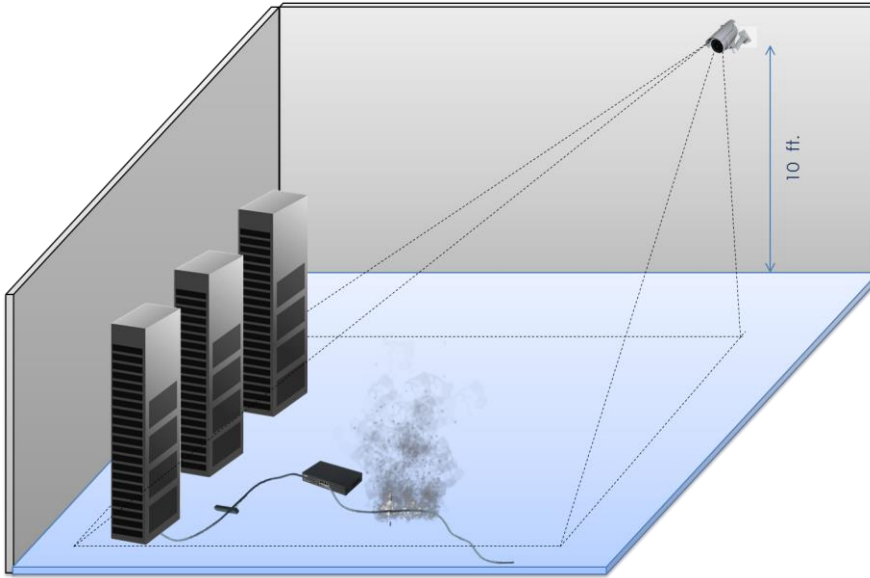


Technical Specification

1. Detection Range: Up to 30 meters
2. Camera Requirements:
 - Fixed Camera Mount
 - Minimum capture rate of 25 fps
 - H264 / MJPEG encoder
 - Installation angular at a height of 1.7m – 20m
3. Environment : Both Indoor and Outdoor
4. Nature of Smoke:
 - Cover at least 10-15% of the camera FOV
 - Slow Movement
 - Medium / High smoke density
5. Fire & Smoke Detection Time: 5 Seconds
6. Event Recording: +/- 10 seconds of smoke activity recording in mpeg4
7. Field Tuneable Parameters:
 - Smoke suspected zones from user
 - Smoke detection sensitivity (0-1)
 - Smoke detection trigger time (min 5 sec).

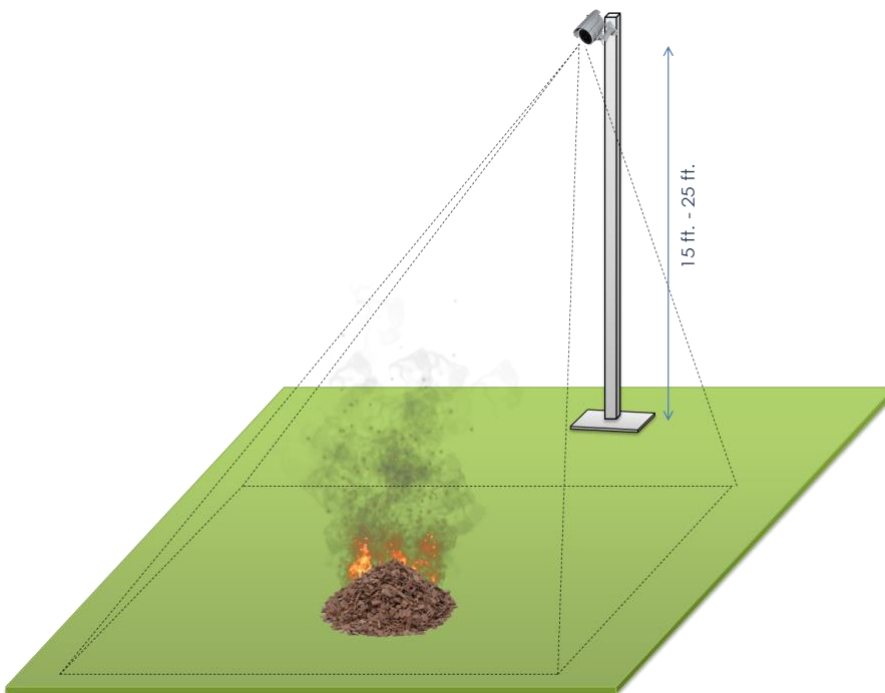
Camera Installation Scenario

Camera Setup for Smoke & Fire Detection (Indoor)



Angular Camera
 Height of Installation (Indoor)
 = approx. 10 feet
 Focusing towards the monitoring zone
 No occlusion scenario

Camera Setup for Smoke & Fire Detection (Outdoor)



Angular Camera
 Height of Installation (outdoor) = 15 -
 25 feet
 Focusing towards the monitoring zone
 No occlusion scenario

INTEGRATION

AllGoVision application is available in 2 flavours:

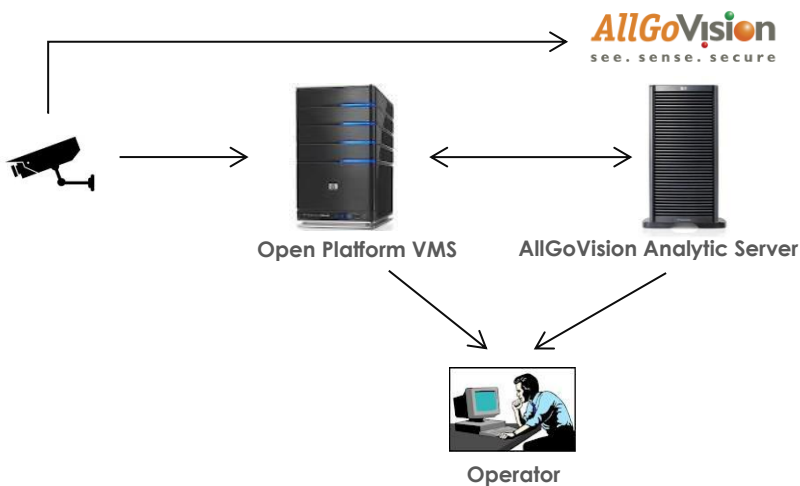
With VMS:

- AllGoVision application is based on Open Platform Standards.
- It is integrated with many VMS.

Without VMS:

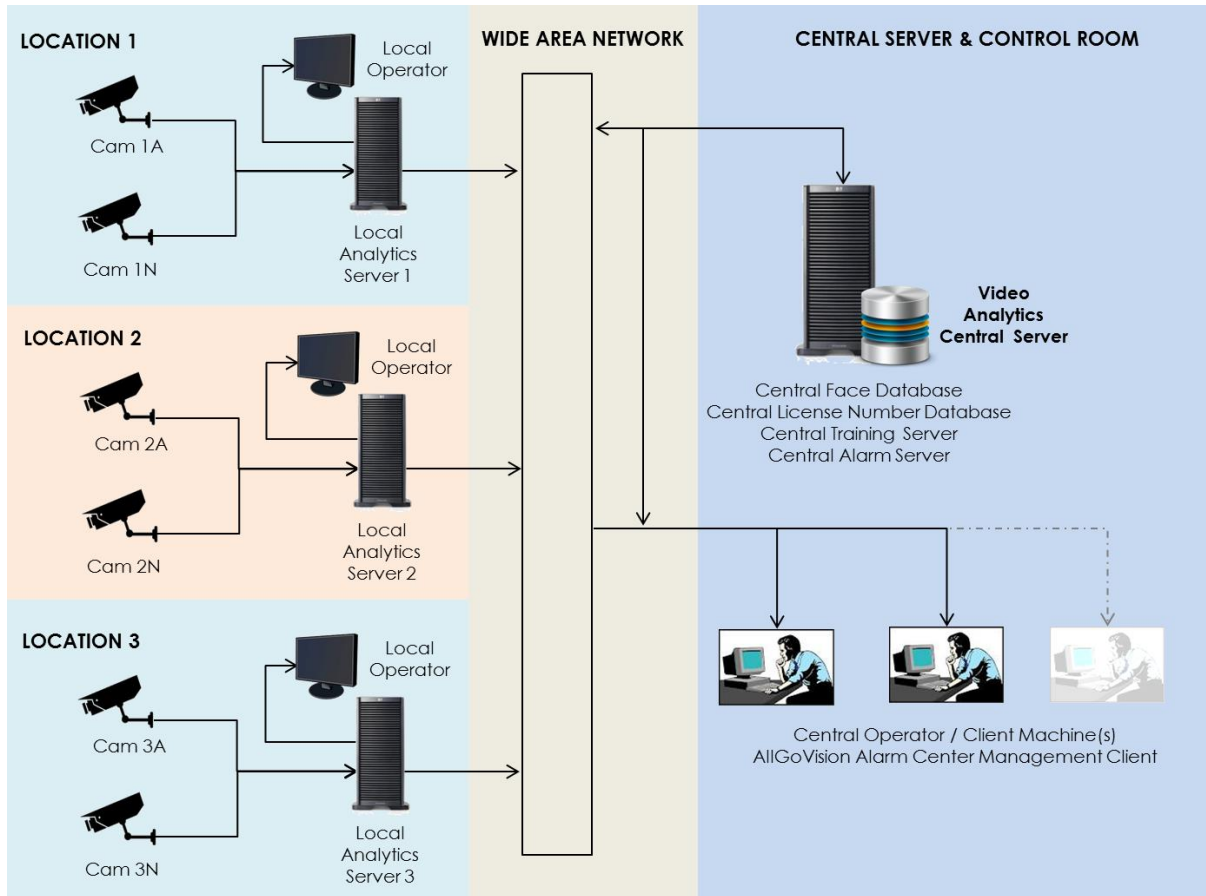
- It is a standalone application.
- It works independent of VMS.
- Directly takes the video feed from camera.

Architecture: A simple architecture with VMS is shown below. The video from the CCTV camera is processed by AllGoVision video analytics server. The alarms can be viewed in the viewer.



Federated Architecture

- With Federated Architecture, analytics can be done at local servers and viewed by local operators.
- A central server with a central operator can view all the alarms in the system.
- Alarms from different clients can be seen at the central Alarm Center and alarms are differentiated through Client IDs.



ALLGOVISION GUI

AllGoVision product offers a graphical user interface with windows-oriented, tab based, point and pick interface. Extensive use of graphical icons, pull-down menus, buttons, check boxes, and radio-buttons are incorporated to reduce typing work to the minimum possible extent.

AllGoVision product GUI consists of following seven tabs:

Server Setup Tab

The server setup tab consists of VMS or camera settings and other field details. You are able to view the video details from camera.

Analytics Setup Tab

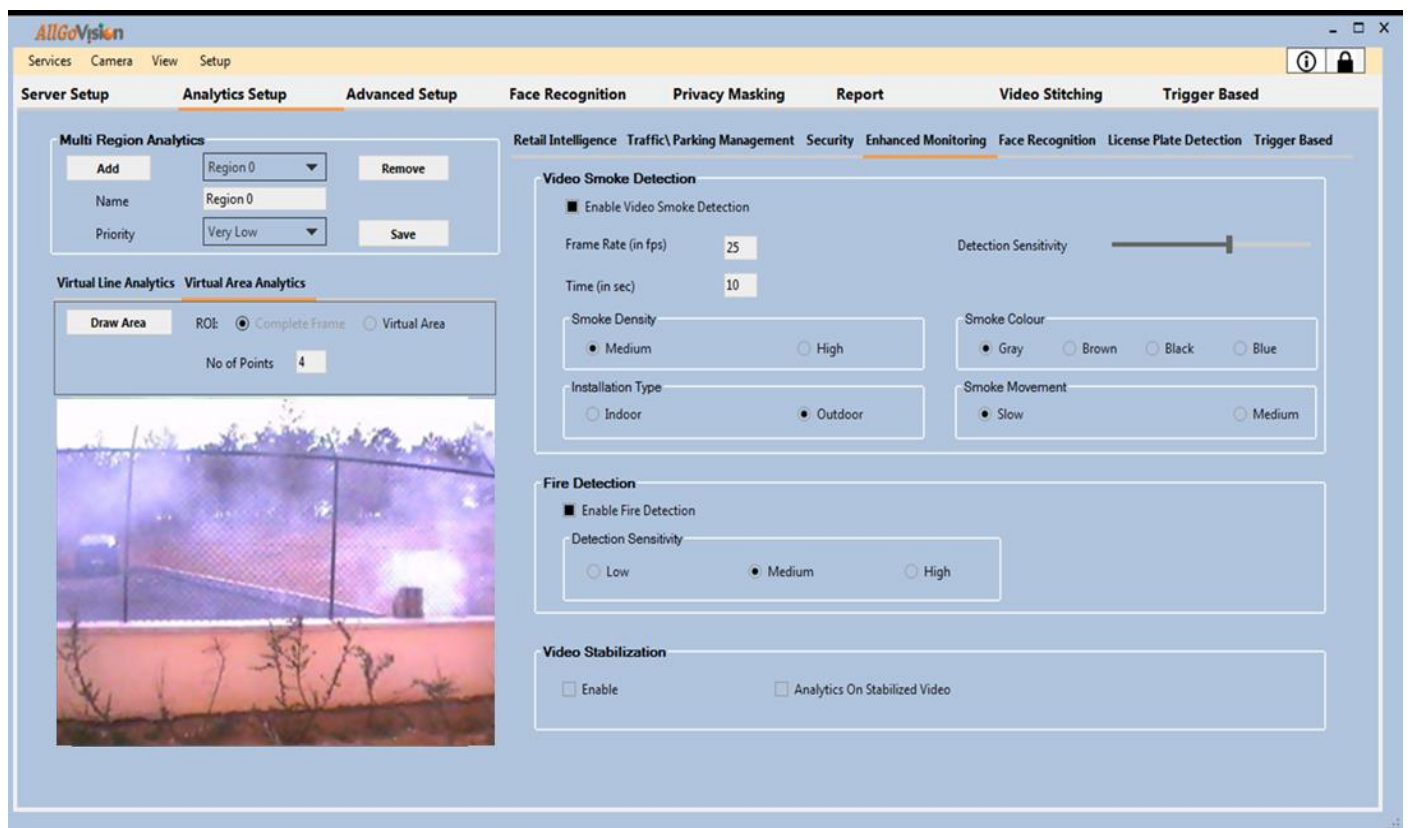
The Analytics setup tab gives options to set the analytics fields for different features.

Advanced Setup Tab

This tab gives options to select advanced settings like camera environment, analytics processing complexity, shadow removal sensitivity, camera view, predefined object size and minimum object size.

Trigger Based

This allows running analytics from trigger like that from RFID.



AllGoVision Management Client

The screenshot displays the AllGoVision Alarm Center interface. On the left is a navigation menu with options like Search/Preview, Video Summary, Live View, Data Analysis, Reports, Face Detection, License Plate Detection, Parking Management, and Face Recognition. The main area features a table of alarm events and two video preview windows.

AlarmID	TimeStamp	AlarmName	AlarmDescription	CameraName	SourceLocation	ObjectType	ObjectColor	ObjectSize	Req	Priority
1053	13-03-2015 13:3	SMOKE_DETECT	SMOKE_DETECTOR	Warehouse	Entrance	Unidentified	Unidentified	Large		VERY_LOW
1052	13-03-2015 13:3	SMOKE_DETECT	SMOKE_DETECTOR	Warehouse	Entrance	Unidentified	Unidentified	Huge		VERY_LOW
1051	13-03-2015 13:3	SMOKE_DETECT	SMOKE_DETECTOR	Warehouse	Entrance	Unidentified	Unidentified	Huge		VERY_LOW
1050	13-03-2015 13:3	SMOKE_DETECT	SMOKE_DETECTOR	Warehouse	Entrance	Unidentified	Unidentified	Large		VERY_LOW
1049	13-03-2015 13:3	SMOKE_DETECT	SMOKE_DETECTOR	Warehouse	Entrance	Unidentified	Unidentified	Huge		VERY_LOW
1048	13-03-2015 13:3	SMOKE_DETECT	SMOKE_DETECTOR	Warehouse	Entrance	Unidentified	Unidentified	Huge		VERY_LOW
1047	13-03-2015 13:3	SMOKE_DETECT	SMOKE_DETECTOR	Warehouse	Entrance	Unidentified	Unidentified	Huge		VERY_LOW

Below the table are two video preview windows. The 'Alarm Preview' window shows a warehouse interior with a large blue bounding box highlighting a significant amount of white smoke. The 'Alarm PopUp' window shows a similar view with a timestamp '13-03-2015 13:38:01' and the alarm name 'SMOKE_DETECTOR' and location 'Warehouse'.

AllGoVision Alarm Center – Alarm Management Client