



# Data Sheet

Version Number: 3.5

<http://www.allgovision.com>

# Copyright Information

© 2009-2010 AllGo Embedded Systems Private Limited, Bangalore, India.  
All Rights Reserved.

All information contained in this document is the property of AllGo Embedded Systems Private Limited., It is not to be disclosed by the recipients to third parties, neither allowed to be reproduced by or for third parties in any form or by any means, electronic nor mechanical, including photocopying, without prior written permission from AllGo Embedded Systems Private Limited.

## TABLE OF CONTENTS

1	Introduction .....	5
2	System Requirements .....	6
3	Features .....	7
4	AllGoVision GUI .....	10
5	Appendix .....	11

# 1 INTRODUCTION

This Specification sheet gives the details of system requirements, features of AllGoVision.

AllGoVision is a Video Analytics software product for actionable intelligence in security installations. The product provides excellent return on investment for a wide range of applications, including City surveillance, Building surveillance, business intelligence, factory automation, loss prevention, public liability assessments, training, consumer behavior analysis, monitoring traffic flow, and many more.

The technology evaluates the contents of video to determine the specific information about the video contents. The product analyzes rapidly the video for specific data, behavior patterns, tracking movement of people/objects in monitoring zones.

## 2 SYSTEM REQUIREMENTS

AllGoVision Analytics has the following system hardware and software requirements





<b>Category</b>	<b>Requirement</b>
Operating System	Windows Server 2003, 2008,2012 Windows Vista® , Window 7, Windows XP
CPU	Intel® Core2™ Duo, minimum 1.6 GHz
RAM	Minimum 512 MB (1 GB recommended for large views, 1 GB recommended on Microsoft Windows Vista).
Network	Ethernet, 100 Mbit or higher recommended.
Graphics Adapter	AGP or PCI-Express, minimum 1024×768 (1280×1024 recommended), 16 bit colors
Hard Disk Space	5 GB Free
Hardware Requirements	x86 Platform
Server requirement (for 640x480 resolution)	Core i3/i5/i7 for up to 16 channels Xeon 4 core or 6 core for up to 32 channels Xeon 8 core or 12 coew for up to 64 channels
VMS	Genetec Security Center 5.1 and above (including 5.2)



### 3 FEATURES



The AllGoVision Analytics is robust to weather changes, lighting changes, tree swaying and other background distractions. The AllGoVision also works well in crowding conditions. The AllGoVision supports object classification.

The software is easy to install and simple to use with intuitive GUI. AllGoVision also supports customization through variation of features for specific applications.


- AllGoVision GUI has scheduler to enable scheduling of Video Analytics and Administrator Login.
- AllGoVision supports alarm video creation and snapshot creation.
- Supports AllGoVision Alarm Center with support for reporting

SI No	Feature	Description	Example
1	Tripwire 	Detection of Person or Vehicle crossing a virtual line	Intruder detection on fenced areas, Alert monitoring at the entrance, Illegal crossing of Railway line
2	Tailgating 	Detecting a person (individual) or vehicle following too closely the person or vehicle in front to get past access controlled entrances or barriers.	Unauthorized access at the mall entrance, gated communities, office premise
3	Counting 	Counting of people or vehicle after crossing a virtual line	People counting to analyze foot fall statistics in malls, retail shops, buildings, Vehicle counting to analyze traffic capacity Vehicle counting for parking lot
4	Trespass 	This feature is used for detecting person or vehicle entering or exiting virtual area	Intruder detection in restricted areas. Illegal entry into restricted area in Banks, Shops Entry of person or vehicle into restricted area or exit from that. Over Speeding in

SI No	Feature Name	Description	Example
			the restricted area
5	Wrong Way Detection 	This feature is used for detecting people or vehicle moving in wrong direction	Vehicle moving in wrong direction in one way system, People exiting at the designated entry only areas
6	Loitering Detection 	This feature is used for detecting of Vehicle or person persistence beyond a specified time in a virtual area	People loitering in malls, People or vehicle having longer dwell time in restricted areas
7	Object removal detection 	Detection of object removal like paintings hanging on a wall	Artifact protection in museums
8	Crowd Detection 	This feature is used for detecting people gathering in a virtual area	Illegal crowding on roads, railway station, in front of buildings
9	Leftout Baggage Detection 	This feature is used for detecting the people leaving out baggage in public place	Threat detection due to baggage left unattended in public place like malls, roads
10	Illegal Parking Detection 	This feature detects parking of the vehicle in no parking zone	Illegal parking on road sides in no parking areas or restricted zones Illegal parking of the vehicle in front of the gates
11	Over speeding detection	This feature detects over speeding of the vehicle	Over speeding on highways and city roads

SI No	Feature Name	Description	Example
12	Camera Tampering	This feature detects Camera focus change or obstruction or video cable cut	Intentional sabotage by vandals
13	Multi Region Analytics	This allows multiple regions to be set for a single frame. The alerts are detected simultaneously for these regions	Monitoring of entry and exit regions simultaneously
14	Smart Auto PTZ control	This feature allows automatically do one step PTZ operation to capture closer video of violator as well as monitoring	Monitoring of violation with closer capture of violator for evidence
15	Object Tracking using PTZ camera	This feature allows tracking of object using PTZ camera	Continuous tracking of object like intruder Continuous tracking of vessels in Sea
16	Object classification	Classify objects as people and vehicle	
17	Face Capture 	<b>Face capture :</b> Detects face in the camera FOV, captures it and stores it <b>Face tracking:</b> Tracks the face in camera FOV	Face capture & storage for future evidence at airports, retail shops, financial institutes
18	Video Based Smoke Detection 	VSD will provide smoke detection for both indoor & outdoor environments. The smoke detection can provide rapid detection of smoke even when smoke is formed in 10-15% of the view. The smoke can be with or without fire.	Critical Infrastructures, Oil & Energy industrial plants, Garages, large indoor



19	Video stitching with object tracking  	Stitching of 2-4 camera video with object tracking	Critical infrastructure monitoring like Airports, Railways Border Security Building Surveillance Retail Surveillance
----	---	--	--

- AllGoVision supports Auto Emailer for reports
- AllGoVision supports Administrator Login
- AllGoVision supports people counting report generation

## 4 ALLGOVISION GUI

AllGoVision product offers a graphical user interface with windows-oriented, tab based, point and pick interface. Extensive use of graphical icons, pull-down menus, buttons, check boxes, and radio-buttons are incorporated to reduce typing work to the minimum possible extent.

AllGoVision product GUI consists of six tabs:

- **Server Setup Tab** - The server setup tab consists of Genetec server and other field details. You are able to view the video details from Genetec server
- **Analytics Setup Tab** - The Analytics setup tab gives options to set the analytics fields for different features
- **Advanced Setup Tab** - This tab gives options to select advanced settings like camera environment, analytics processing complexity, shadow removal sensitivity, camera view, predefined object size and minimum object size
- **Report Tab** - This tab gives option to plot the statistics of people counting. Both line and bar charts are possible. This also has auto e-mailer and export of plots and report.
- **Video Stitching** - This allows stitching of Videos from 2-8 cameras. The output is displayed in the same tab. The objects detected are also shown with Red rectangles.
- About Tab

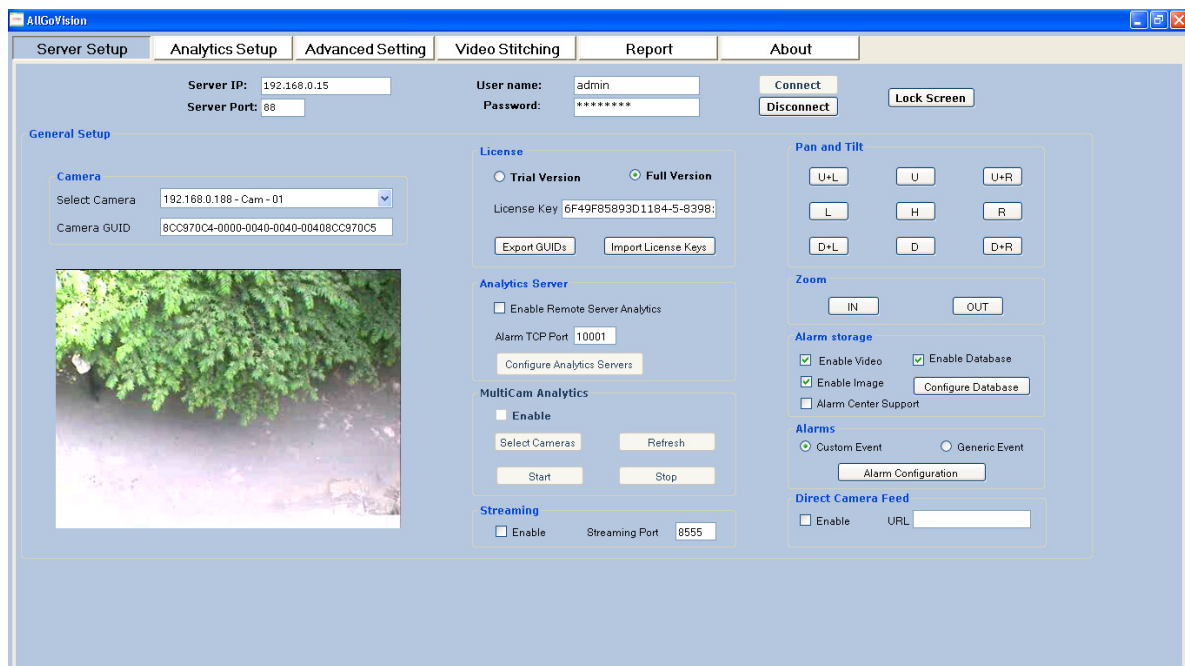


Figure 1: AllGoVision Product GUI

## 5 APPENDIX:

### GENETEC INTEGRATION

- AllGoVision takes Security Center client login credentials to connect to Security Centre and get video feed from AllGoVision.
- AllGoVision supports all IP cameras supported by Security Centre.
- AllGoVision sends events to view in Security Center. Different features for different cameras create different events.
- AllGoVision also provides custom task for Security Desk to view alarms with video and pop up.

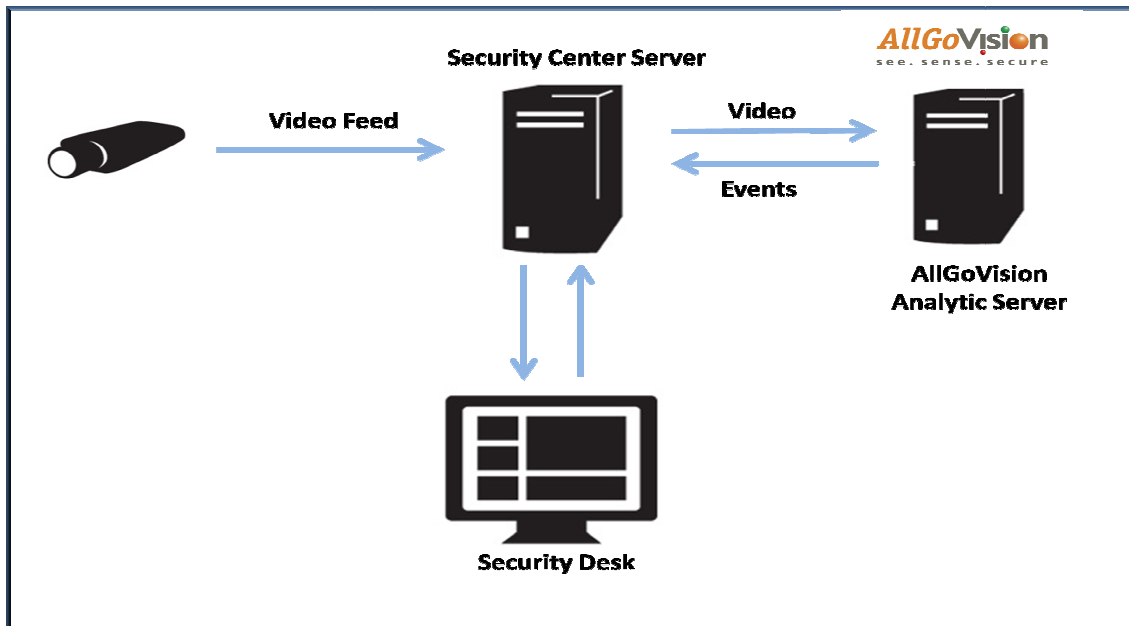


Figure 2: Genetec Integration

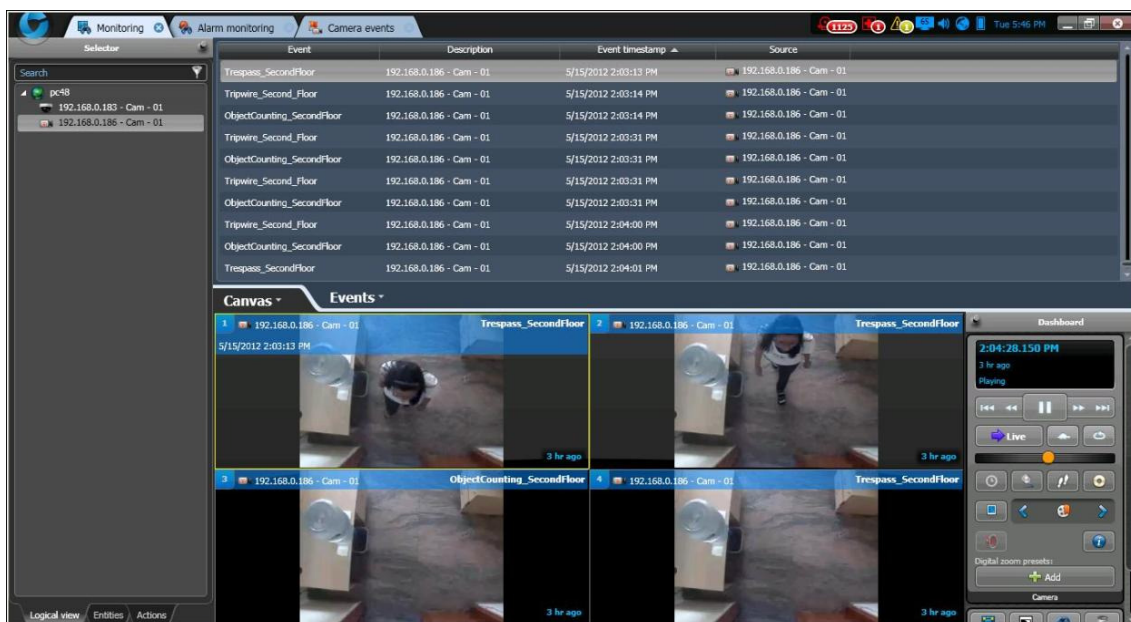


Figure 3: Events received in Security Desk from AllGoVision

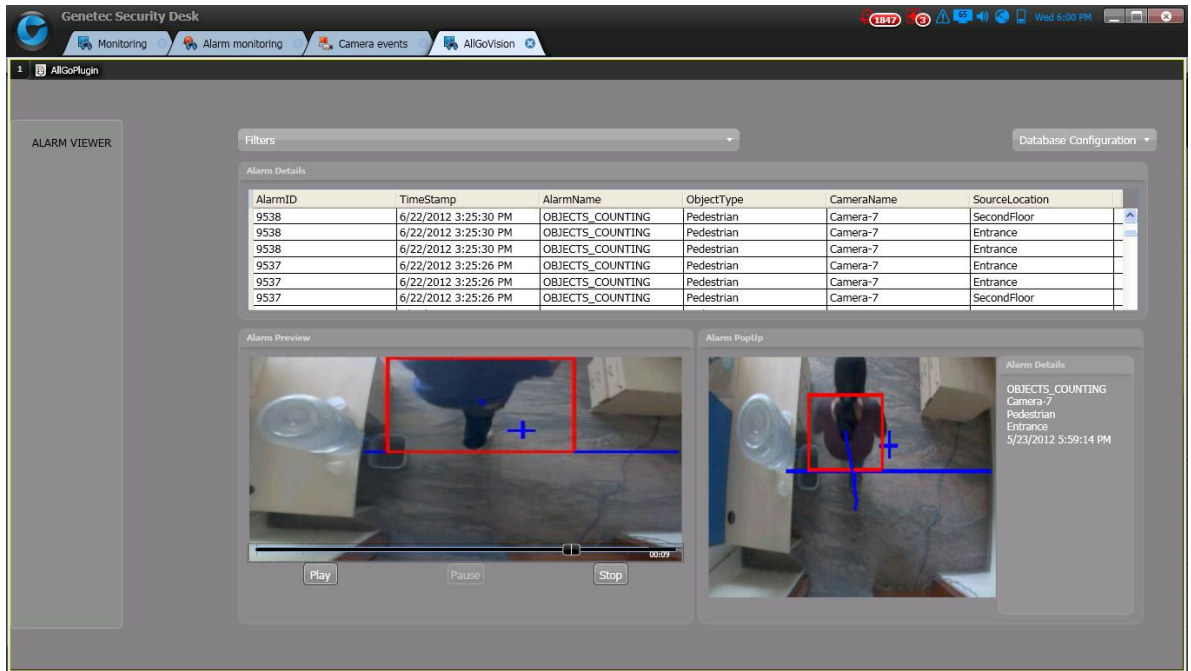


Figure 4: AllGoVision alarm view custom task in Security Desk